

LBT-T300-M400-C3

4G Routing

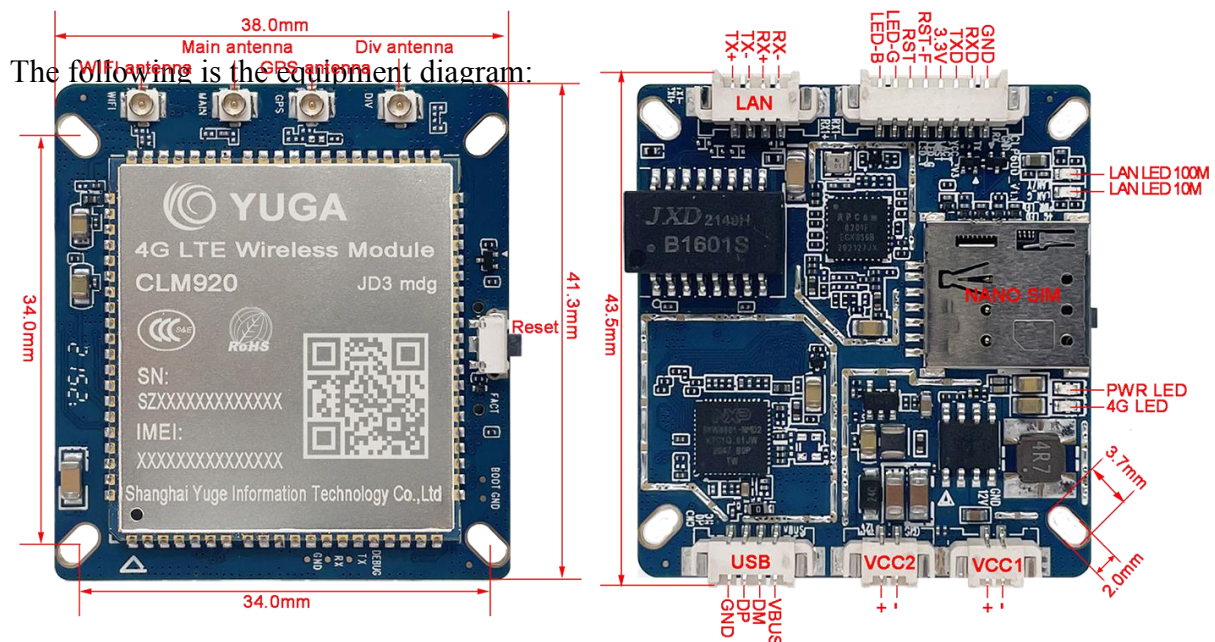
Equipment User Manual

1.Introduction

M400-C3 is a 4G routing terminal equipment equipped with ASR platform 4G wireless communication module. Support LAN Ethernet port, support WIFI, support GPS, support dual antenna, support USB2.0 and other functions.

The device provides Wi-Fi AP function. The default name of the Wi-Fi SSID is UFI-xxxx (xxxx is the last 4 digits of the WiFi MAC address), and the default password is 12345678.

The default address of the device is 192.168.1.1, login <http://192.168.1.1> WEBUI management page, you can make various settings, the initial login account password is admin:admin.



Note:

- 1) The DC power supply voltage range is 6V to 25V, it is recommended to use the matching power adapter.
- 2) Supports factory reset button.

- 3) Please clear the browsing history of the browser before using the WEBUI management function.

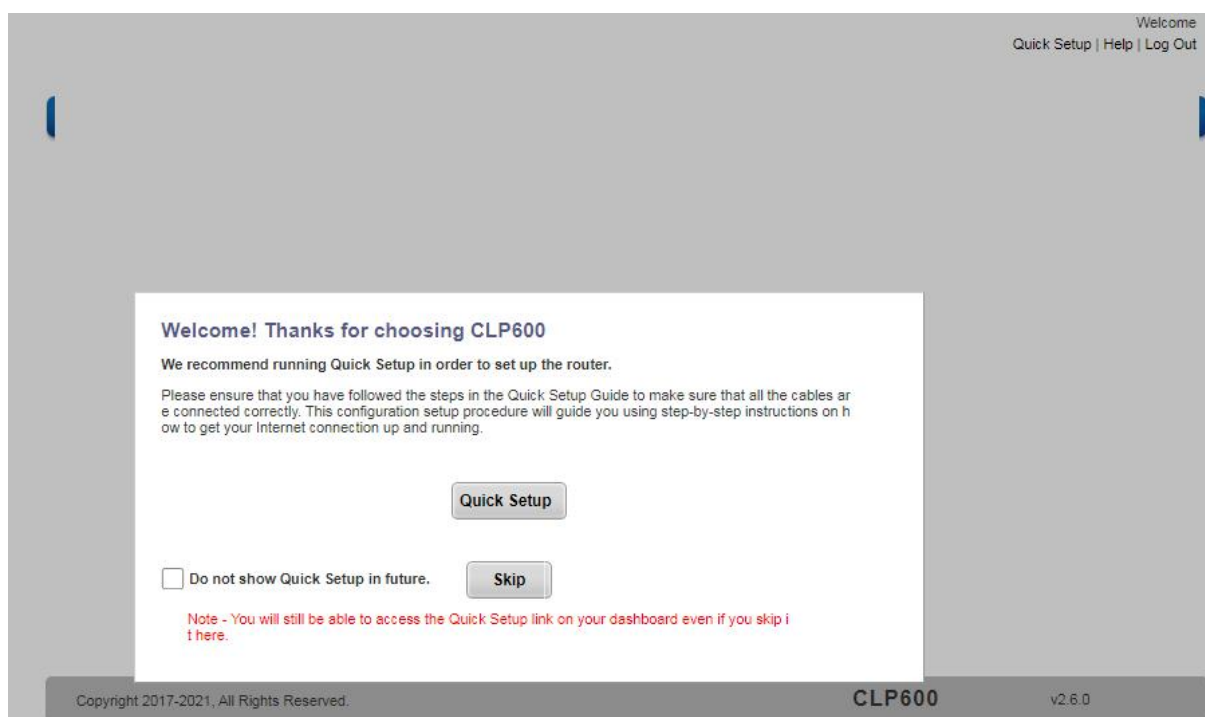
2. Web UI management system

The default settings of the device can work, and the default settings can also be modified through the WEBUI management page.

2.1 Basic function introduction

2.1.1 The user enters "192.168.1.1" in the browser to log in to the interface

When logging in for the first time, you can choose quick settings to set up basic routing functions in turn, or skip directly to the page



Enter the page to view the basic information and status of the device

Welcome
Quick Setup | Help | Log Out

Dashboard Internet Home Network PhoneBook SMS Wireless Router

Internet

Cellular Connection
Signal Strength:

Cellular Data Connectivity:
Enabled [Disabled](#)

Internet Connection
Network Operator:
CHN-UNICOM
Cellular Network Mode:
LTE
PDP Information
PDN1
PDP Type
Default Primary PDP
PDP Connection Status
connected
IPv4 Address
10.3.191.245

Router

Router Information
Router LAN IP:
192.168.1.1
IMEI:
123456789012347
Router Network Mask:
255.255.255.0
Router MAC:
00:00:00:6b:0e:b1
Run Time:
0 Day 0 Hour 3 Minutes 49 Seconds
Battery Charging:
No Battery
Battery Electric Quantity:
No Battery

Software Information
Device Mode:
MIFI
Software Version:

Home Network

Connected Devices
1

Wireless
Enabled

Wireless Settings
Wireless Network:
UFI_FFD7
Security Mode:
WPA2-PSK
Channel Number:
Automatic

DHCP Server
Enabled

Traffic Statistics
Sent Packets:
352

2.1.2 Network mode and connection status

You can set the network mode, connection status, PIN code management, traffic statistics and traffic restrictions, etc.

Dashboard

Internet

Home Network

PhoneBook

SMS

Wireless

Router

Internet Connection

Traffic Statistics

PIN Management

Manual Network

MEP Setting

USSD

Internet Connection

My Internet Connection is

Cellular

Version Switch

WCDMA

Network Mode

4G/3G/2G multimode

Preferred Network Mode

4G Preferred

Preferred LTE Type

TD-LTE preferred

Connection Mode:

Auto

☐ prohibit automatic dial-up in the roaming status.

MTU

1500

(1000-1500)

Auto APN

☒ Auto Configure APN

Engineering Mode

Disabled

PDN1 Settings:

☒ PDN1(Default Bearer)

☐ Dedicated Bearer1

TFT Setting

Save

Copyright 2017-2021, All Rights Reserved.

CLP600

v2.6.0

2.1.3 Home network

This page can configure the gateway address of the device, the IP address and the number of connected devices connected to this device, and can limit the connection of WiFi devices, etc.

Dashboard

Internet

Home Network

PhoneBook

SMS

Wireless

Router

DHCP Settings

Connected Devices

Network Activity

Custom Firewall Rules

Port Filter

Port Forwarding

DHCP Settings

DHCP Range:

192.168.1.1

Router LAN IP:

192.168.1.1

DHCP Server:

Enabled

DHCP Start Address:

192.168.1.100

DHCP End Address:

192.168.1.200

DHCP Lease Time:

86400

DNS Configure Switch:

Disabled

DNS1 IP Address:

DNS2 IP Address:

Redirection Function:

Disabled

Add Static IP

MAC Address	IP Address
No entries found.	

DHCPV6 Settings

DHCPV6 Server:

Stateless Server

Stateful Server

Save

Copyright 2017-2021, All Rights Reserved. CLP600 v2.6.0

2.1.4 Wireless setting

You can set WiFi name and password, hide WiFi, encryption type and maximum number of simultaneous connections, etc.

Dashboard

Internet

Home Network

PhoneBook

SMS

Wireless

Router

Wireless Settings

Wireless Security Settings

Wireless MAC Filters

Wireless Settings

Status:
☒ Enabled ☐ Disabled
802.11 Mode:
802.11n(b/g compatible)
Channel Bandwidth:
20 MHz
Primary Channel:
Automatic
Band40 ACS Switch
☒ Enabled ☐ Disabled
Maximum Simultaneous Clients:
8
Beacon Period Setting
100 (in msec(50~4000))
DTIM Interval Setting
1 (1~100)
AP Isolate Switch
Close

Save

Wifi Auto Off Function

☒ I want to disable wifi auto off function.

Save

Dashboard

Internet

Home Network

PhoneBook

SMS

Wireless

Router

Wireless Settings

Wireless Security Settings

Wireless MAC Filters

Wireless Security Settings

Network Name (SSID):
4G_AP_5B94
Network Visibility Status:
☒ Visible ☐ Invisible
Wireless Security:
WPA2-PSK
Add WPS Client
Password:

☐ Unmask Password
WPA Cipher:
AES (Stronger)

Save

2.1.5 Router management

You can change the user password, restore factory Settings, and restart the device, etc.

Welcome
Quick Setup | Help | Log Out

DashboardInternetHome NetworkPhoneBookSMSSMSWirelessRouter

User Management

Configuration Management
Software Upgrade
Reboot Router
Power Off Router
Time Setting
SD Card File
SD Card Management
ACS Management

User Management

Router Username:
admin

Router Password:

Save

Copyright 2017-2021, All Rights Reserved. CLP600 v2.6.0

3.2 Common faults and analysis

malfunction	Cause Analysis
light is not on	Check whether the power interface and power supply equipment are normal
UI shows no network	Check whether the device recognizes the SIM card normally Check the local network conditions.
Can't open the web UI	Check whether the network port or USB is normal Have you entered the gateway address normally or changed the gateway address yourself.
The terminal device cannot connect to the device via WiFi	Confirm whether the WiFi password is correct. Confirm that the WiFi function is normally turned on and the WiFi hotspot is not hidden. Confirm that the connected device is not in the blacklist.