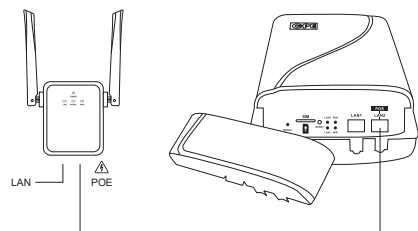


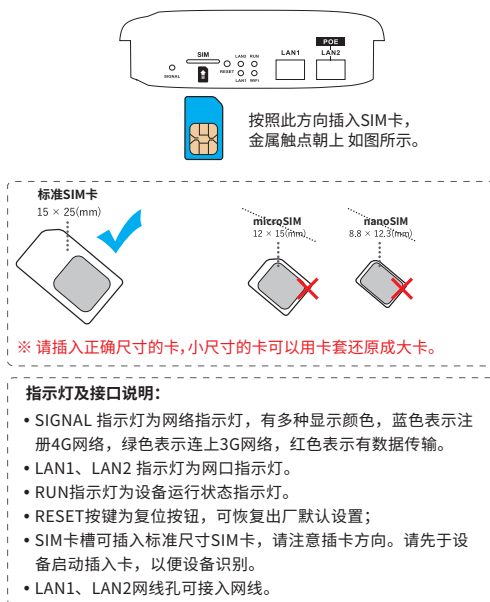
# 组网套装 产品使用手册



感谢您选择我们的产品，使用本产品前请仔细阅读此指导手册，按照步骤操作使用本产品。阅读后请妥善保管，以备日后查阅。

Ver 6.09.27001

## 插卡指导



1

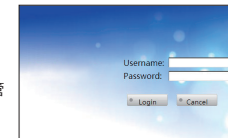
## 套装版 组网接线示意图



2

## 室内设备管理界面

- 1、使用手机连接设备发射的默认WiFi信号 WiFi\_XXXXXX。无线名称及密码详见产品机身背面标贴。
- 2、在手机浏览器地址栏上手动输入 **192.168.5.1** 进入管理后台。
- 3、在后台登陆界面。输入默认账号 admin 密码 admin 即可进入设备管理后台界面。



**温馨提示：**你也可以使用电脑对其设置，①设置电脑IP自动获取，②电脑网线接口连接设备LAN孔，③电脑浏览器的地址栏输入192.168.5.1 打开设备管理界面，输入默认账号及密码即可对其进行设置。如对电脑不熟悉的，建议用手机对设备进行设置。

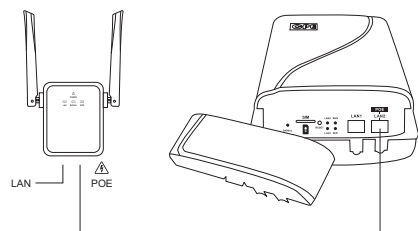
**重置设备方法：**在设备通电的情况下，长按设备侧面上的 RESET 按键5-8秒，松开即可将路由器恢复到出厂状态。

## 室外设备管理界面

- 1、使用手机连接路由器发射的默认WiFi信号。默认WiFi为以LTE-WiFi\_为前缀的无线信号。
- 2、在手机浏览器地址栏上手动输入 **192.168.188.1** 进入管理后台。

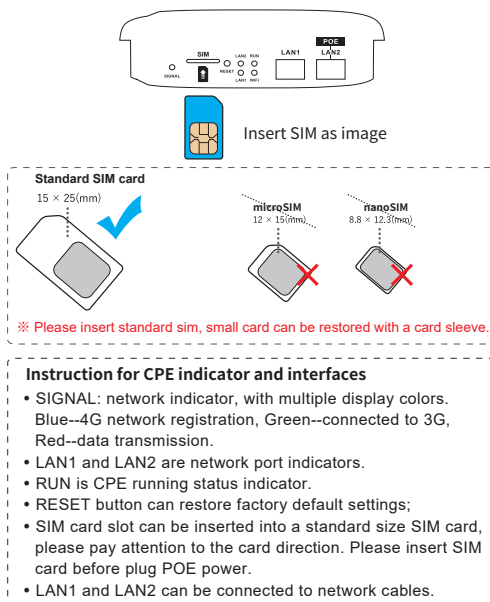
3

# A suit to creat the internet Instruction Manual



Thanks for choosing our product, please read this instruction manual carefully before using, use the steps to operate this product. Keep it in safe place for future use after reading.

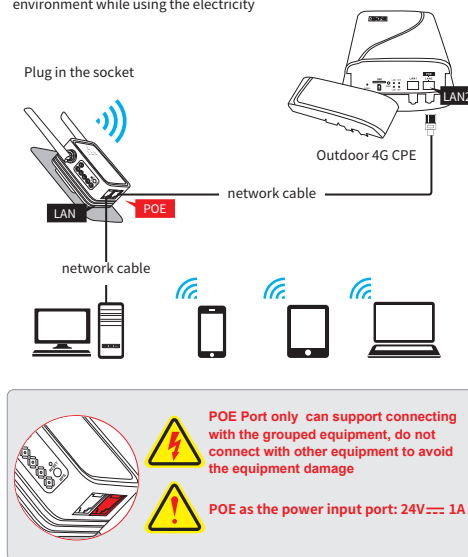
## Insert SIM card



1

## Another Connection Diagram Method

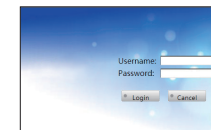
Using the group equipment, connect with the right interface according to the picture, POE port as the output power supply , please in a safe environment while using the electricity



2

## Indoor Device Management

- 1: Use the cell phone to connect the default WIFI signal transmitted by the device. default wifi name WiFi\_XXXXXX, Wireless wifi name and key please see the produce back side paper.
- 2: using mobile browser to manually enter 192.168.5.1 in the browser address bar to enter management backstage.
- 3: In the background login page, enter the default account admin and password admin to enter the device management backstage interface.



**Warm tips:** you can use the computer to set up 1: Set up a computer to automatically get IP 2: Computer network interface connecting device LAN port 3: The address bar of the computer browser is entered into 192.168.5.1, opens the device management interface, and enters the default account and password to set it up. **If you are not familiar with computer, use cell phone to set it up.**

**Reset device method:** when the device is energized, press device's RESET key in the side for 5-8 seconds and release, device make factory default.

## Outdoor Device Management

- 1: Use the cell phone to connect the default WIFI signal transmitted by the router. default wifi LTE-WiFi\_XXXX.
- 2: using mobile browser to manually enter 192.168.188.1 in the browser address bar to enter management backstage.

3

3、在后台登陆界面。输入默认账号 admin 密码 admin 即可进入路由器管理后台界面。



温馨提示：你也可以使用电脑对其设置，①设置电脑IP自动获取，②电脑网线接口连接路由LAN孔，③电脑浏览器的地址栏输入192.168.188.1 打开路由器管理界面，输入默认账号及密码即可对其进行设置。**如对电脑不熟悉的，建议用手机对路由器进行设置。**

### 设置 Wi-Fi 网络名称及密码

在路由器管理后台界面点击导航栏“局域网设置”->“Wi-Fi 设置”->“2.4G WiFi设置”->“基本配置”，在“WiFi名称”输入框里输入你想设置的名称，在“WiFi密码策略”选择“AES”，在“WiFi密码”输入框里输入你想设置的密码，点击“应用”按钮确认设置。

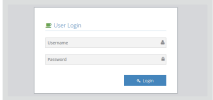


温馨提示：设置完成之后，你的手机WiFi连接可能会断开，重新连上你设置的WiFi名称，输入你设置的密码即可连接。

※ 以上截图仅供参考，如有变动，请以实际显示为准。

4

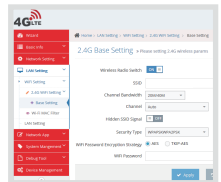
3: In the background login page, enter the default account admin and password admin to enter the router management backstage interface.



Warm tips, you can use the computer to set up 1: Set up a computer to automatically get IP 2: Computer network interface connecting router LAN port 3: The address bar of the computer browser is entered into 192.168.188.1, opens the router management interface, and enters the default account and password to set it up. If you are not familiar with computer, use cell phone to set it up.

### Wifi Name and password settings

In the router management background, click on the navigation bar "LAN Setting" -> "WiFi Setting" -> "2.4G WiFi Setting" -> "Base Setting", enter the name of what you want in the SSID, and select AES in the "WiFi Password Encryption Strategy" and enter the password you want in WiFi Password, click the "Apply" button to confirm the setting.



Warm reminder: after the installation is completed, your cell phone WIFI connection may be disconnected, reconnect the name you set, and enter the password you set to connect.

※ The above screenshots are for reference only. If there is any change, please refer to the actual display.

4

### 常见问题解答

FAQ1: 设备如何恢复出厂设置  
设备通电启动情况下，用手指按住Reset键8秒，然后松开即可。

FAQ2: 找不到设备的Wi-Fi信号  
本设备发射的Wi-Fi信号为方便用户近距离使用移动设备进行设置，距离远了信号就无法连接上。也有可能是设备禁用了无线功能，可按照如下方式启用：计算机通过网线连接LAN口，登陆路由器管理界面“局域网设置”->“WiFi设置”->“2.4G WiFi设置”->“基本配置”，无线功能开关，确认此选项开启。

FAQ3: 在浏览器地址栏输入 IP，无法打开管理页面  
1.如你是用电脑进行设置的，打开浏览器，点击“工具”-> 点击“Internet选项”，点击“连接”->点击“局域网设置”，确保代理服务服务器不要勾选。

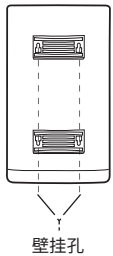
2.请检查计算机的无线网络配置或本地网络配置，确保计算机“自动获取IP地址”，“自动获取DNS服务器地址”。  
3.重启设备，断开设备电源，稍后再插上电源。  
4.如果完成以上操作后仍然不能登录设备管理界面，建议您将设备复位，复位方法参见FAQ1。

FAQ4: 设备信号灯亮起，有数据传输，但上网速度慢  
1.请将设备安装到其他位置，如朝向空旷位置，确保能更好的接收4G信号。  
2.重新通电，让路由器重新启动。

FAQ5: 设备运行期间换卡，为什么设备无法读取到SIM卡  
设备不支持SIM卡热拔插，插拔动作请在断电状态下进行，请先断开设备电源，稍后再插上电源。

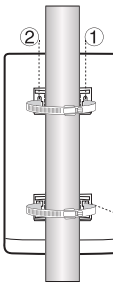
5

### 室外设备安装方式



#### 壁挂式安装

在墙壁上打上两个钉子（随机配送），两个钉子间距 2.7 厘米。钉子固定好后，把背板大孔处挂在钉子上，往下扣住即可。

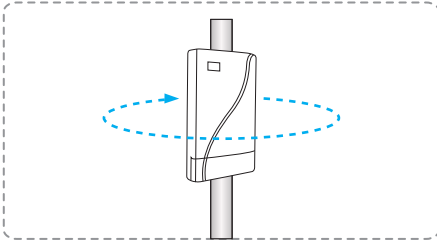


#### 抱杆式安装

先将所配的“O型固定环”解开，从①穿到②；再将穿好的设备安装到固定杆上，用螺丝③锁紧即可，抱杆的尺寸直径可以 64 - 76 毫米之间；

6

### 设备朝向调节指导说明

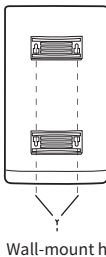


先进设备后台，在 网络信息 页面，查看网络信息 - 信号强度 数值，该值越接近31这个数值，说明信号越好。信号强度数值太低的话，小幅度旋转设备，刷新页面，再次查看数值。如此重复操作，找到信号强的朝向即可。建议每隔30秒刷新一次，过于频繁刷新可能影响数值准确性。



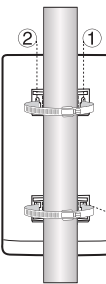
7

### Outdoor CPE Installation diagram



#### Wall-mount installation

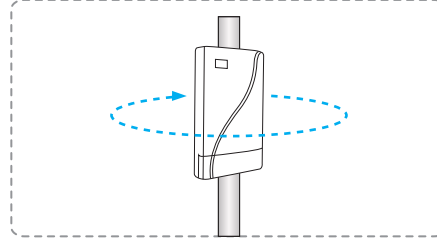
Hammer two nails (come with goods) on wall, distance between two nails 2.7cm. Hang the cpe back case holes on the nails, buck down.



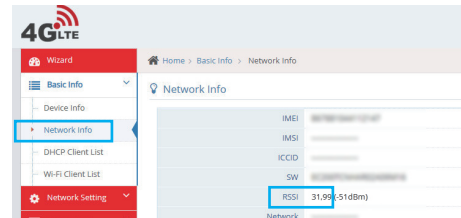
#### Pole holding installation

Unfix the O rings come with the cpe, pass through 1 to 2. Then install the CPE on pole and lock tightly with the screw 3. The diameter of pole can be around 64-76mm.

### Instructions for adjusting CPE's orientation



Log in the web UI, check RSSI in "Network Info". The closer 31, the better signal. If it's too low, please rotate CPE slightly, refresh the page, and check RSSI again. Repeat the operation in this way to find the direction with strong signal. It is recommended to refresh every 30 seconds, too frequent refresh may affect the numerical accuracy.



7

5

6